

— FOR SUBLEASE —

PRIME OFFICE SPACE

Boones Ferry Road near Kruse Way, Lake Oswego, Oregon



FOR SUBLEASE!

15450 SW Boones Ferry Road
Lake Oswego, OR

- Approximately 2,000 sq.ft.
- Sublease to April 30, 2026
(longer term possible)

SPACE FEATURES

- Five Private Offices
- Sliding Glass Barn Doors
- Large Breakroom (open gathering area)

BUILDING AMENITIES

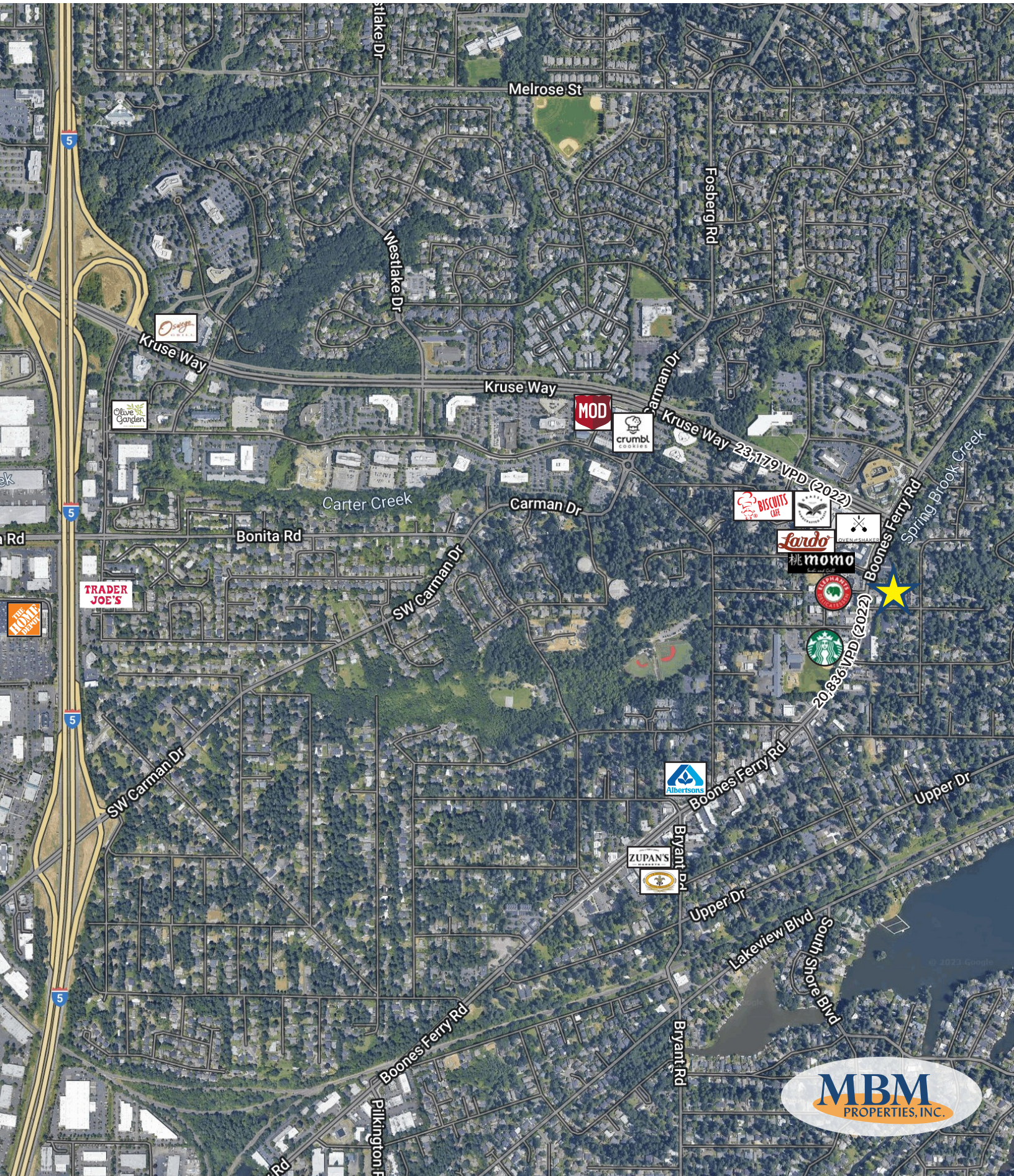
- Beautiful Lobby/Reception with fireplace
- Modern, Class "A" finishes
- Off-street parking
- Monument signage available

Tenant Relocating – Please Do Not Disturb

Mert Meeker • 503.227.7271 • mert@mbmproperties.com



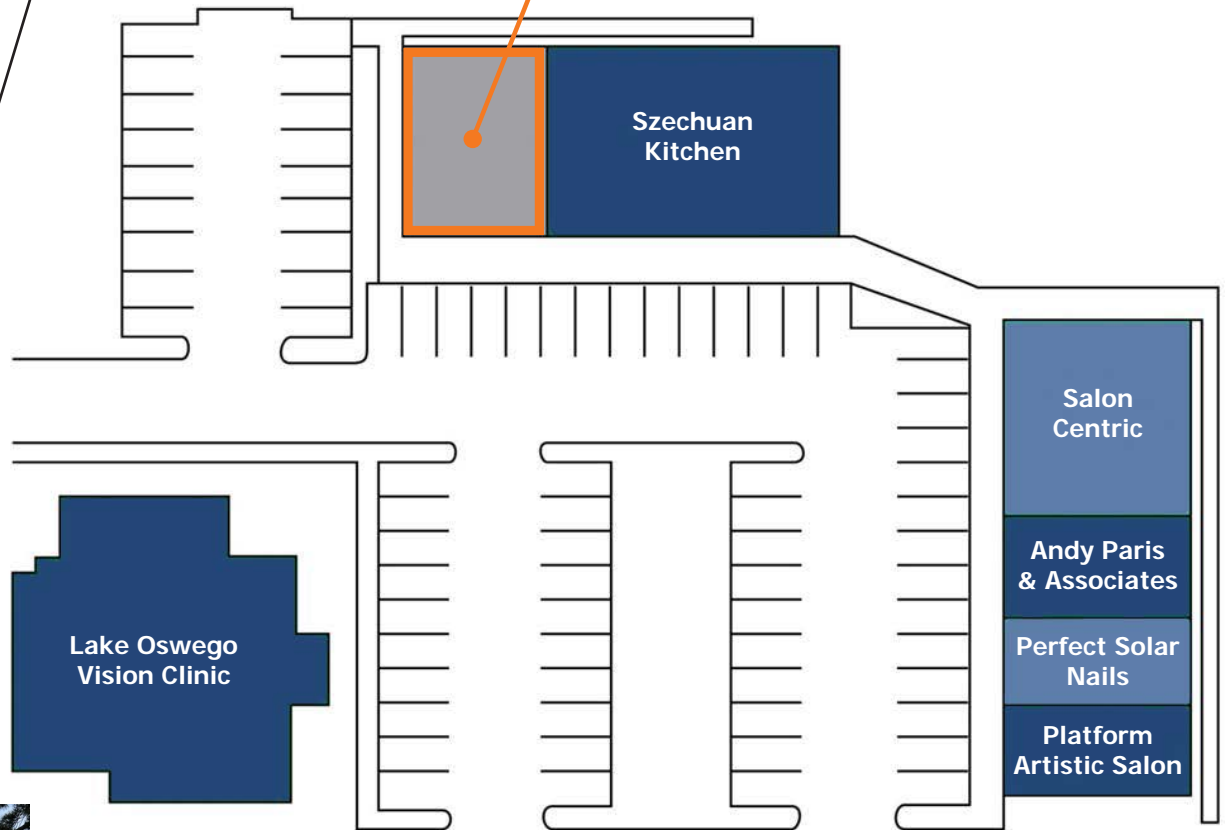
Aerial • Prime Office Space



Site Plan • Prime Office Space

BOONES FERRY RD
20,836 VPD (2022)

APPROXIMATELY
2,000 sq. ft.
**AVAILABLE
FOR SUBLEASE**

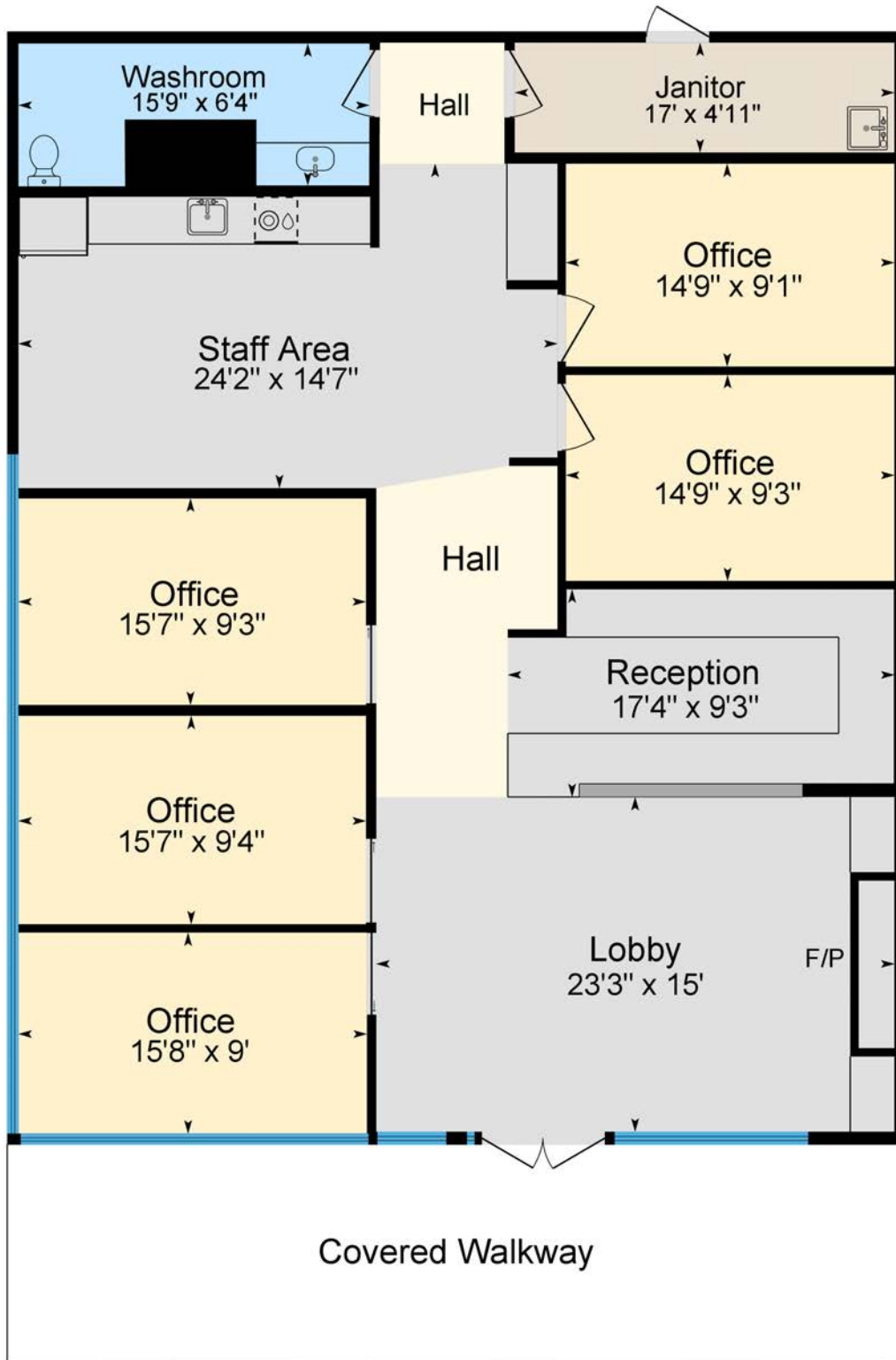


Mert Meeker • 503.227.7271 • mert@mbmproperties.com



The information contained herein has been obtained from sources we deem reliable. We do not, however, guarantee its accuracy. A prospective tenant should field verify all information prior to entering into a lease agreement.

Floor Plan • Prime Office Space

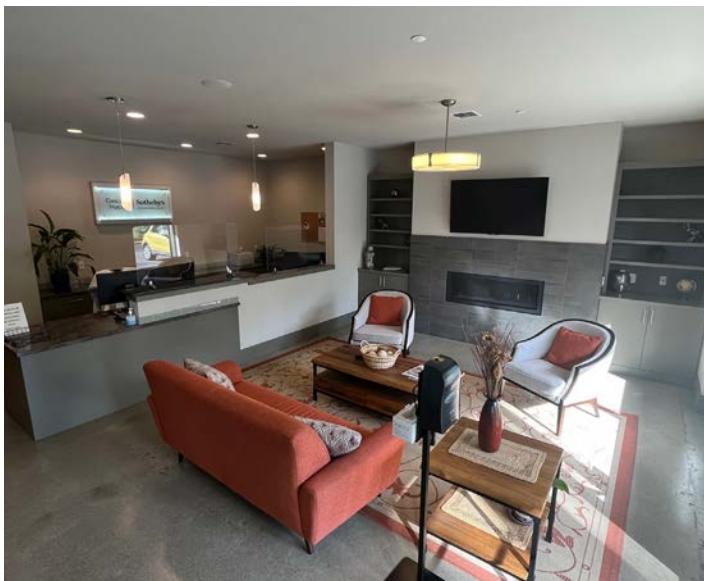


Mert Meeker • 503.227.7271 • mert@mbmproperties.com



The information contained herein has been obtained from sources we deem reliable. We do not, however, guarantee its accuracy. A prospective tenant should field verify all information prior to entering into a lease agreement.

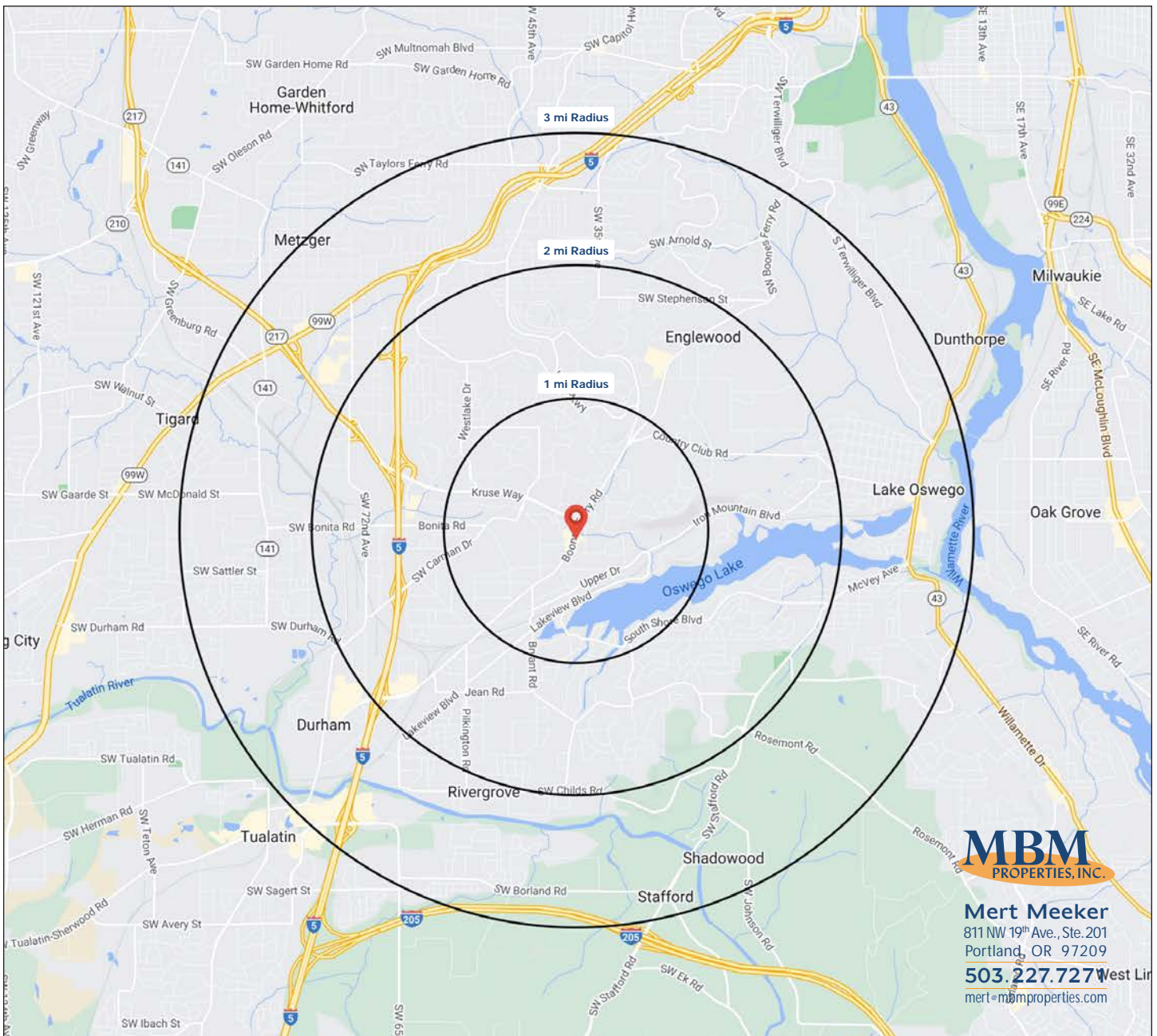
Interior Images • Prime Office Space



Mert Meeker
811 NW 19th Ave., Ste. 201
Portland, OR 97209
503.227.7271
mert@mbmproperties.com

Demographics • Prime Office Space

	1 MILE	2 MILE	3 MILE
Population	11,023	39,102	85,935
Households	4,590	16,153	35,759
Average Household Income	\$197,727	\$208,778	\$186,234
Per Capita Income	\$82,517	\$86,316	\$77,548
Total Number of Businesses	1,414	4,434	8,620
Total Number of Employees	9,939	35,919	65,942
<i>Source: Sites USA (2023)</i>			



MBM
PROPERTIES, INC.

Mert Meeker
811 NW 19th Ave., Ste. 201
Portland, OR 97209

503.227.7277 West Lin
mert@mbmproperties.com